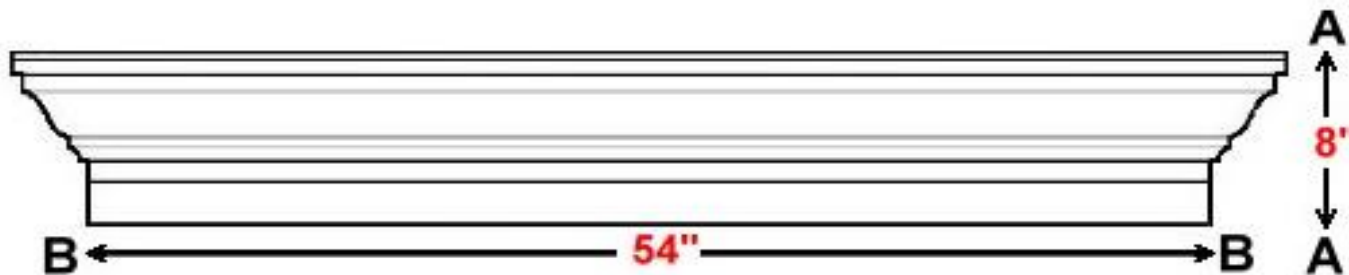


How to Measure for a Window & Door Mantel

1. Based on the style window mantel you have chosen write the height dimension (A) on the form.
2. For windows that have NO casing being installed around the window, measure the top of the window from tip to tip and write that dimension (B) on the form.
3. For windows that will have a casing or lineal material installed around them, measure the top of the window from outside edge of the casing on the left to the outside edge of the casing on the right and write that dimension (B) on the form.



Sample Line

Product Part #	Window Mantel Measurements	Check All That Apply	Quantity	Type of Siding
WM-5	(A: <u>8"</u>) X (B: <u>54"</u>)	<input checked="" type="checkbox"/> Built-in J-Channel <input checked="" type="checkbox"/> Vinyl Nailing Flange	2	Vinyl Quest